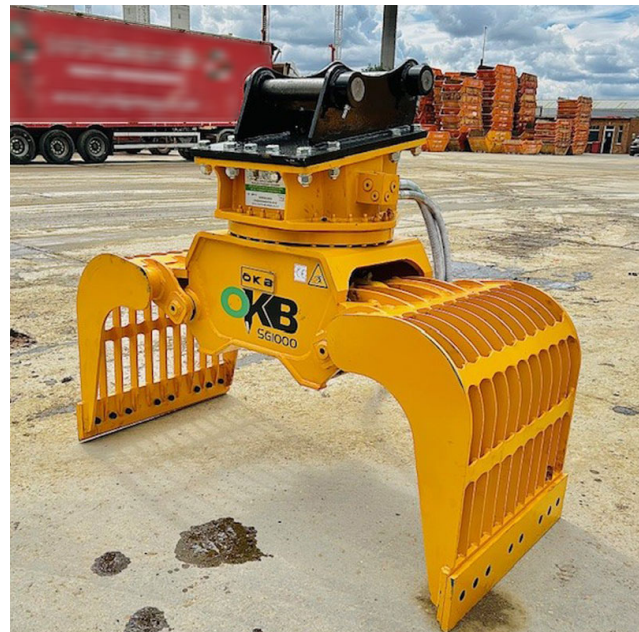
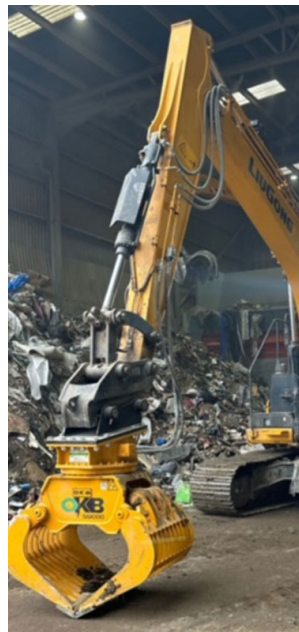
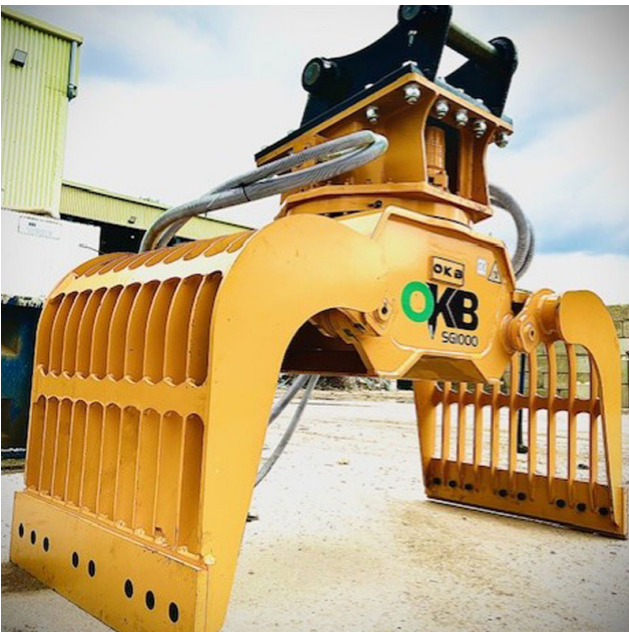


Selector Grabs

available for hire or purchase from
Coyle Equipment services!

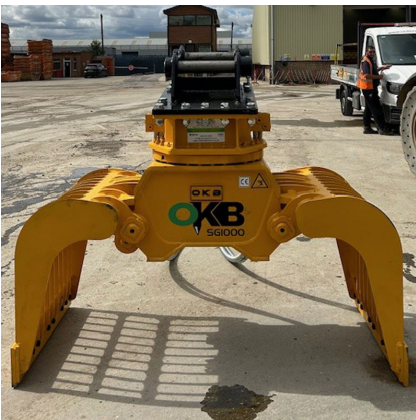
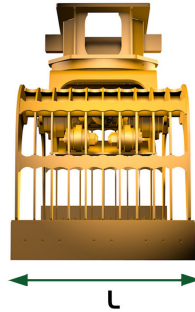
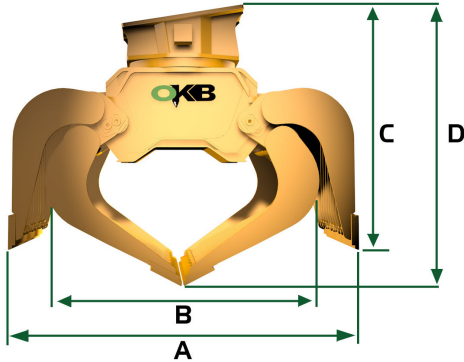


London: 0208 903 8020 - info@cesbreakerhire.co.uk
Birmingham: 01527 336 116 - midlands@cesbreakerhire.co.uk
South West: 0117 203 4368 - southwest@cesbreakerhire.co.uk

www.cesbreakerhire.co.uk



Model	Unit	SG 80	SG 150	SG 300	SG 350	SG 1000	SG 1500	SG2 500	SG 3500	SG 4500	SG 5000
Carrier	Ton	0.7-1.2	1.2-3T	4-7	6-10	10-15	16-22	23-26	27-30	31-37	30-50
Cylinder	Bar	200	300	300	350	350	350	350	350	350	350
	Liters/min	15	25-30	15 - 30	15-30	30-65	40-80	55-110	55-110	95-165	190-210
360° rotation	Bar	100	100	100	100	140	140	140	140	140	350
	Liters/min	5	5-10	6 - 10	8-12	12-20	12-20	14-20	14-20	28-40	28-41
	Tr/min	10	10/15	10/14	10/15	10/15	10/15	10/15	10/15	10/15	10/15
Force	N	600	15000	2000	25000	40000	50000	60000	62000	93000	93000
A	mm	600	915	1160	1290	1710	1845	2000	2100	2270	2350
B	mm	430	541	7080	960	1245	1375	1440	1465	1630	1370
C	mm	595	635	770	910	905	1000	1050	1190	1275	1635
D	mm	600	703	850	930	1080	1100	1290	1375	1425	1830
L	mm	300	448	500	550	800	900	1010	1130	1210	1360
Volume	L	30	50	100	147	395	470	700	820	1080	1100
Weight	Kg	80	180	280	370	745	950	1230	1500	2100	2700



London: 0208 903 8020 - info@cesbreakerhire.co.uk
Birmingham: 01527 336 116 - midlands@cesbreakerhire.co.uk
South West: 0117 203 4368 - southwest@cesbreakerhire.co.uk

www.cesbreakerhire.co.uk

